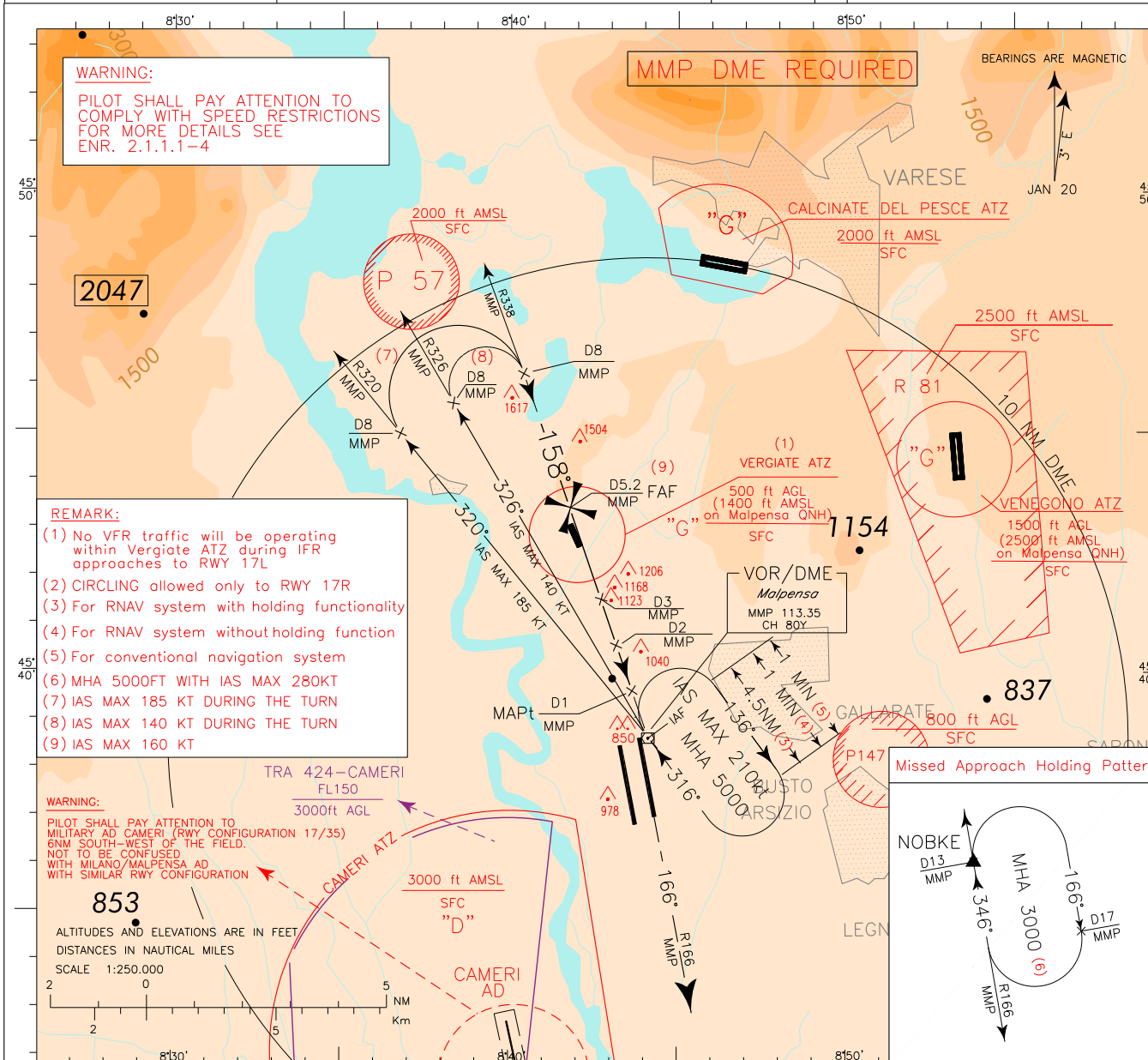


DOC 8168 ED 6-2014 AMDT 8

CHANGE: MAGNETIC VARIATION UPDATED

APP	Milano Radar	CH 125.630 (CH 132.705)	AD ELEV	768	L	MILANO/MALPENSA
TWR	Malpensa TWR	119.000 (128.350)			M	
ATIS	Malpensa Arrival Information	120.025			C	
						VOR RWY 17L



TRANSITION ALT 6000

MISSED APPROACH: Proceed on track 166° (RDL 166 MMP) and climb to 3000 ft to NOBKE missed approach holding pattern. Hold on RDL 166 MMP VOR (inbound track 346°) between 13 NM and 17 NM MMP DME, with right turns.

Obstacle clearance chart showing altitudes (ft) and distances (NM) for the approach to NOBKE. Key points include D8 (3000 ft), FAF D5.2 (2500 ft), D3 (1760 ft), D2 (1425 ft), MAPt D1 (1400 ft), and THR (745 ft). Speed limits are 320° IAS ≤ 185 KT and 326° IAS ≤ 140 KT. A missed approach path is shown climbing to 3000 ft on track 166°. A diagram below the chart shows the horizontal distance in NM from 12 to 0.

OCA (OCH)		A	B	C	D
STRAIGHT IN APPROACH	VOR+DME	1300 (555)			
CIRCLING (2)		1450 (682)	1650 (882)	1710 (942)	

FT PER MIN	GS	DIST MMP	ALT (HGT)
848	160	5 DME	2435 (1690)
742	140	4 DME	2095 (1350)
636	120	3 DME	1760 (1015)
530	100	2 DME	1425 (680)
424	80		

MNM SECT ALT diagram showing altitudes (ft) and distances (NM) for the missed approach. The diagram is a circle with altitudes 10300, 8000, 6000, and 3000. Distances are marked as 10 DME, 203, 283, and 068.

FIX/POINT	Coordinates (WGS84)
IAF (MMP VOR)	45°25'27"N 008°44'05"E
INT RDL320/08 NM MMP VOR/DME	45°44'46.40"N 008°37'07.18"E
INT RDL326/08 NM MMP VOR/DME	45°45'18.74"N 008°38'14.77"E
INT RDL338/08 NM MMP VOR/DME	45°46'00.33"N 008°40'22.27"E
FAF (INT RDL338/5.2 NM MMP VOR/DME)	45°43'21.52"N 008°41'40.54"E
INT RDL338/03 NM MMP VOR/DME	45°41'16.89"N 008°42'41.85"E
INT RDL338/02 NM MMP VOR/DME	45°40'20.25"N 008°43'09.69"E
MAPt (INT RDL338/01 NM MMP VOR/DME)	45°39'23.46"N 008°43'37.59"E